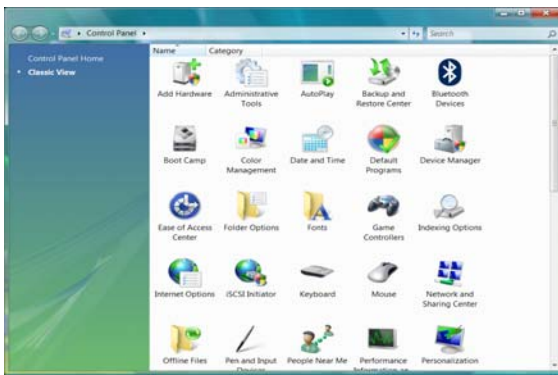


Configuration for Windows Vista

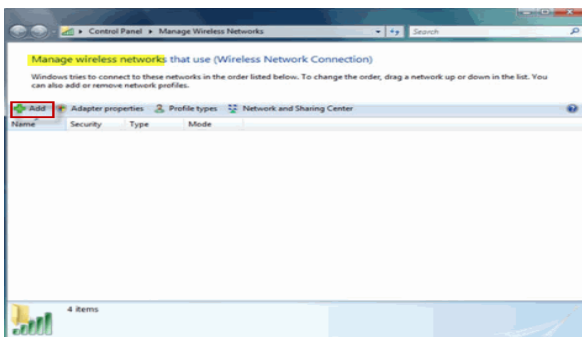
The Lehman College Wireless network broadcasts the SSID (Service Set Identifier), upon launching your web browser; most of the wireless enabled devices will be associated to the Lehman wireless network automatically. Access to the Lehman's wireless networks will require all authorized users in all areas to authenticate to the wireless network using their assigned Lehman's LDAP Account username and password. Only authenticated access to the Lehman wireless network is permitted.

For the first time wireless users, please follow the steps to add the Lehman wireless network connection to your Windows Vista computer.

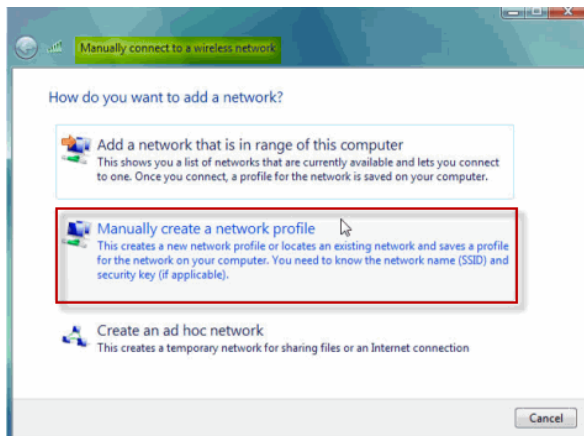
- Go to **Start**, click **Control Panel**.



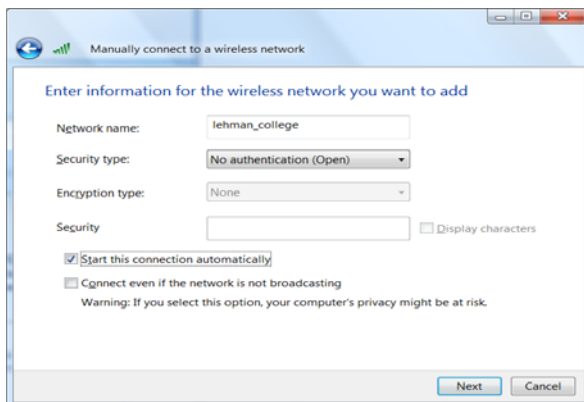
- Select the **Network and Sharing Center** menu item.
- The Network and Sharing Center window open. Select the **Manage wireless networks** link.
- Click the **Add** button



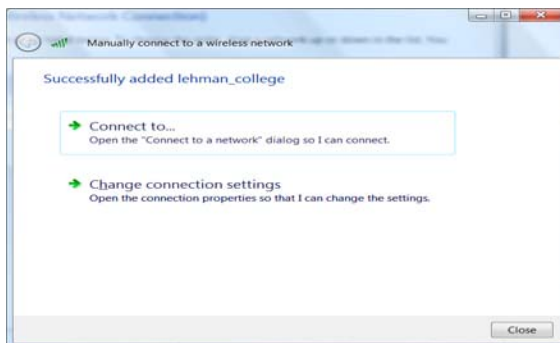
- Click **Manually create a network** profile box.

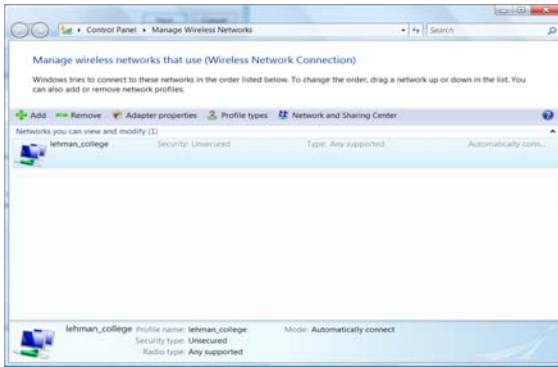


- Enter the network name: "lehman_college". Select **No Authentication** (Open) on Security type combo box.
- Select **None** on the Encryption type combo box.
- Click the **Next** button.

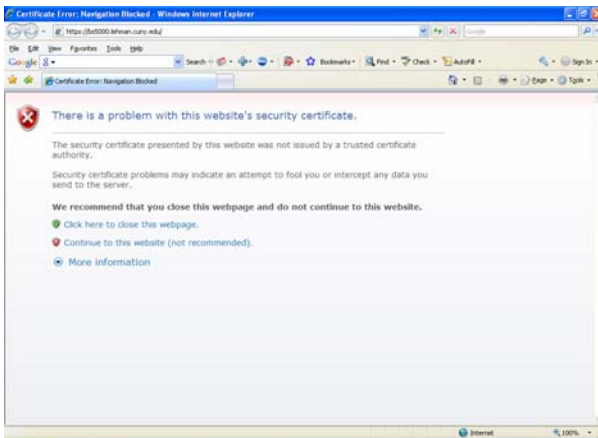


You should see the windows as below

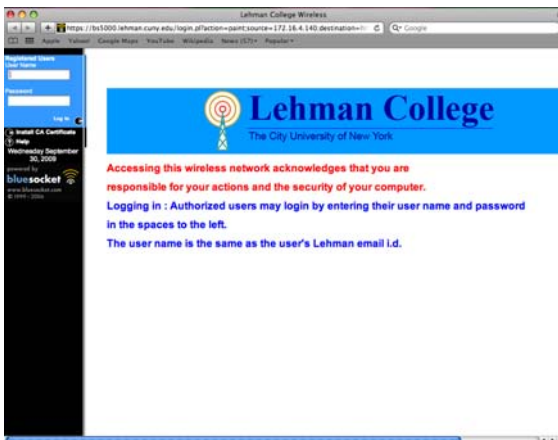




- Open a web browser such as Internet Explorer 8 or Firefox
- Depend on the browser set up on each individual computer; you may see the warning page about website's certificate as follow



- Select Continue to this website



- The browser will be redirected to the Lehman wireless login page
- Enter your Lehman's LDAP username and password

- Click “Login”
- Your Windows Vista computer is now ready to use the Lehman wireless network.