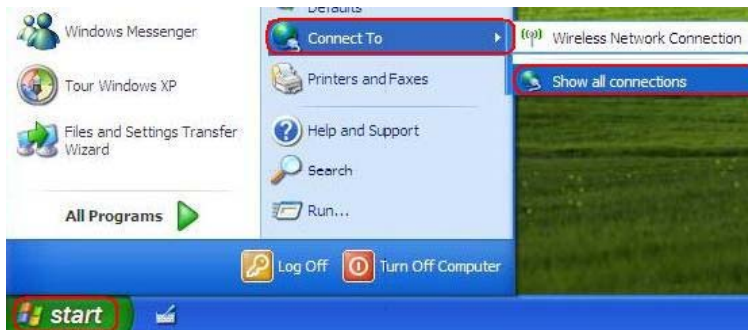


Configuration for Windows XP

The Lehman College Wireless network broadcasts the SSID (Service Set Identifier), upon launching your web browser; most of the wireless enabled devices will be associated to the Lehman wireless network automatically. Access to the Lehman's wireless networks will require all authorized users in all areas to authenticate to the wireless network using their assigned Lehman's LDAP account username and password. Only authenticated access to the Lehman wireless network is permitted.

For the first time wireless users, please follow the steps to add the Lehman wireless network connection to your Windows XP computer.

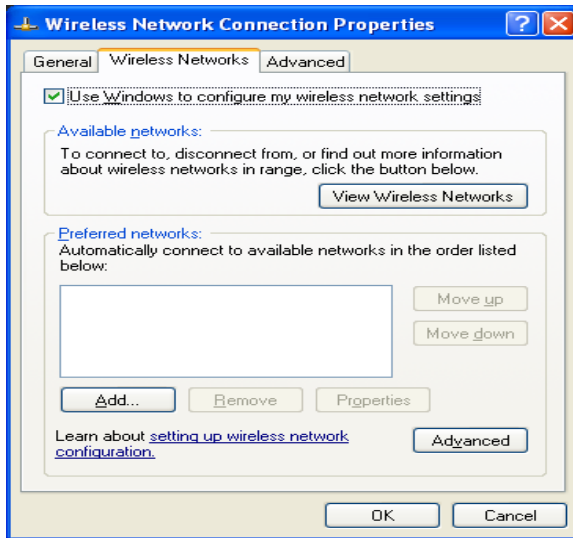
- Click Start, Connect To, and Show all Connections.



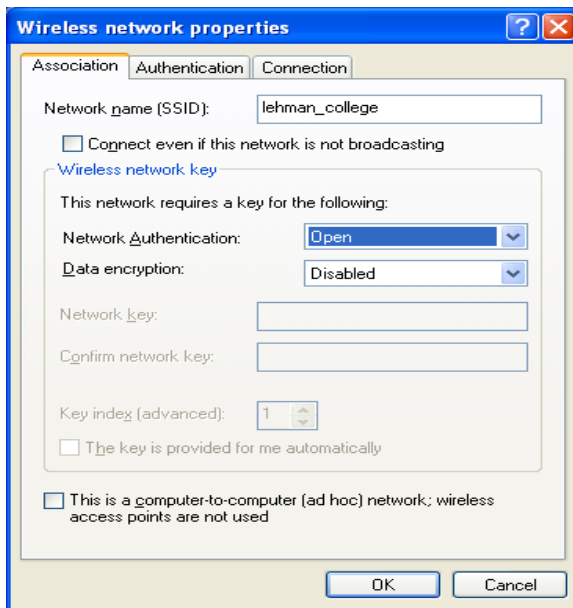
- Right click the Wireless Network Connection, select Properties.



- On the Wireless Networks tab, click Add



- Type lehman_college in the Network name (SSID) field



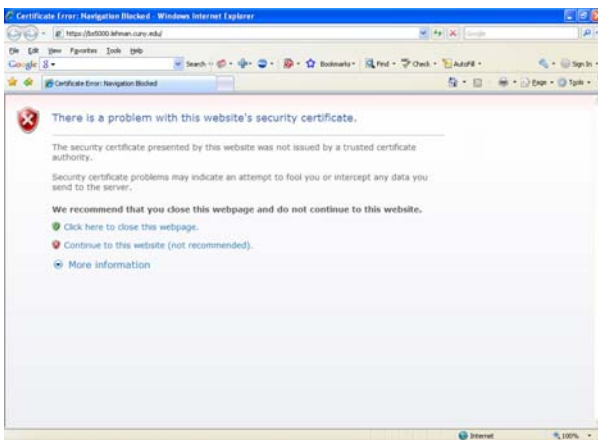
- Select Open under Network Authentication
- Select Disable under Data Encryption
- Uncheck the box “The key is provide to me automatically”
- Click OK on this window and click Continue to save the changes.



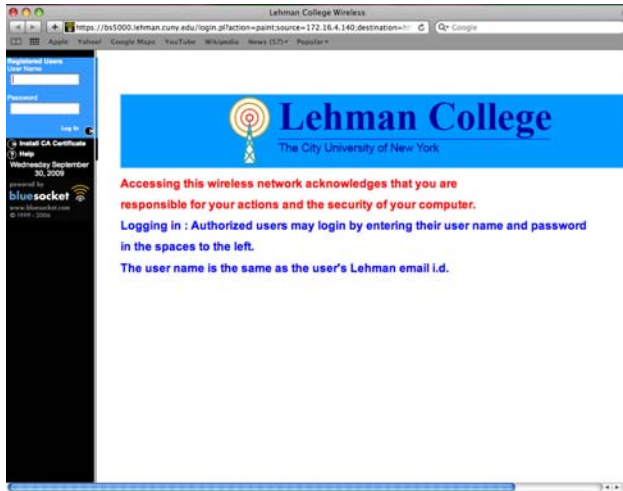
- You will see the Wireless Network Connection bubble on the lower taskbar showed the lehman_college wireless connection speed, status and signal strength



- Open a web browser such as Internet Explorer 8 or Firefox
- Depending upon the browser set up on each individual Notebook computer; you may see the warning page about website's certificate as follow



- Select Continue to this website
- The browser will be redirected to the Lehman wireless login page



- Enter your Lehigh's LDAP username and password
- Click "Login"
- Your Windows XP computer is now ready to use the Lehigh wireless network.