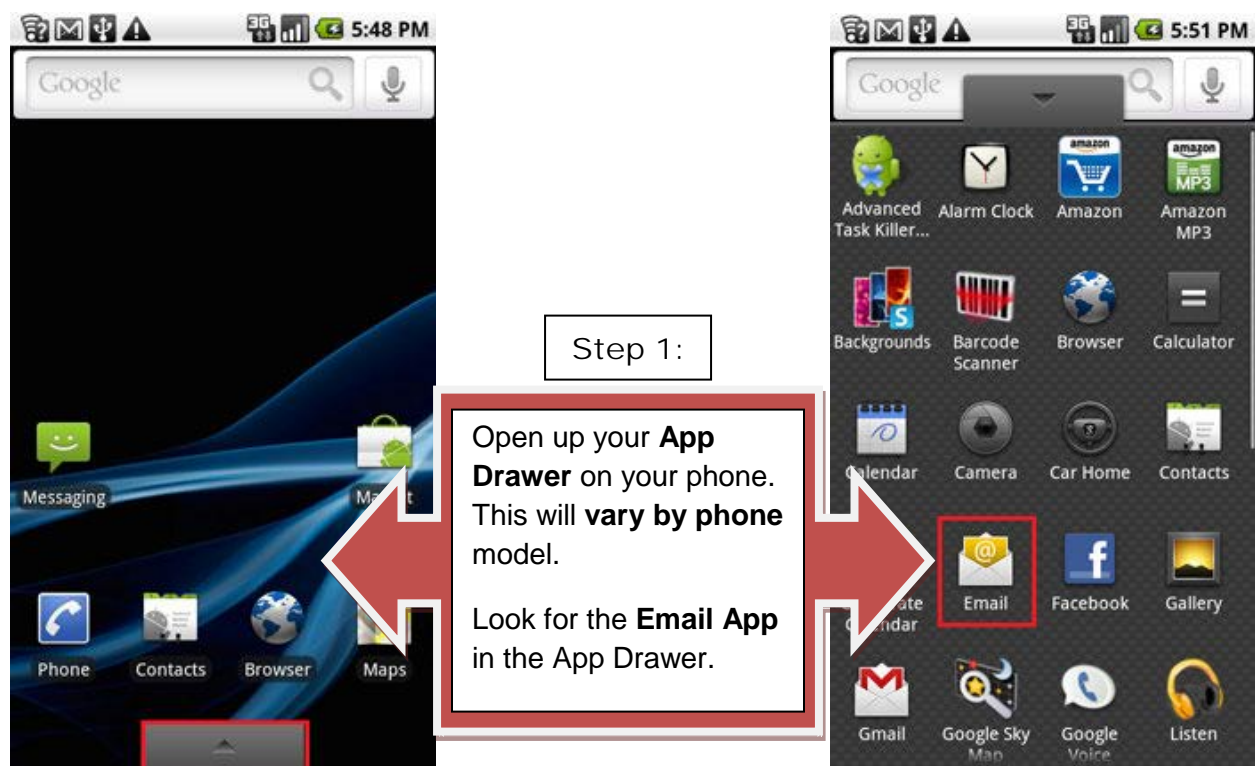
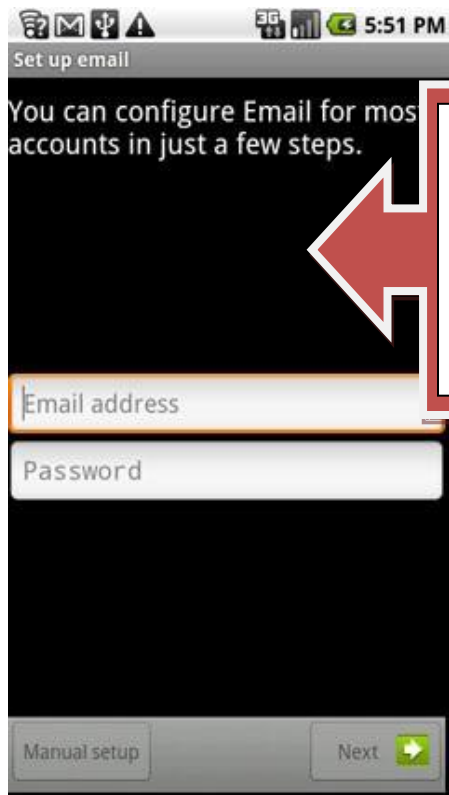


How to configure your Android phone to synchronize your Lehman email account for Faculty and Staff

To configure your email accounts directly from your Android smartphone, follow the instructions below:

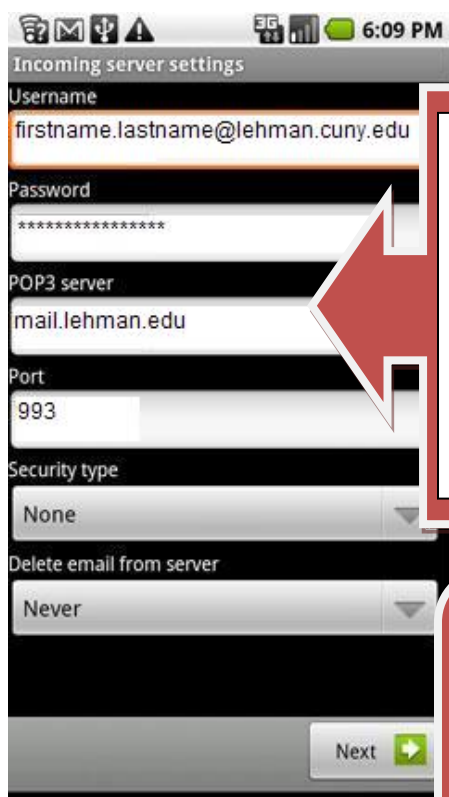
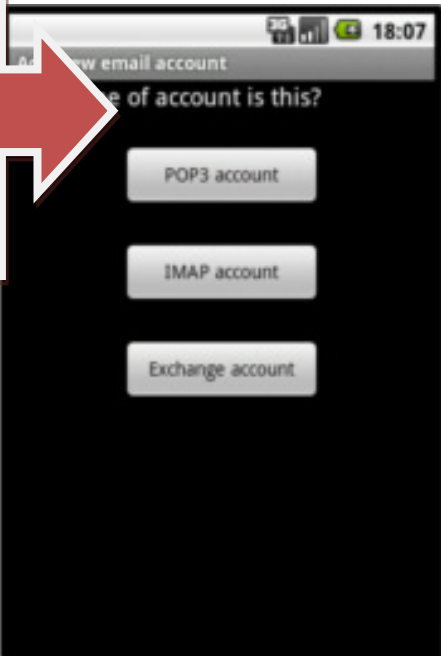




Step 2:

Enter your **Lehman Email** address and **password**, and then tap **Next**

Select **IMAP account**

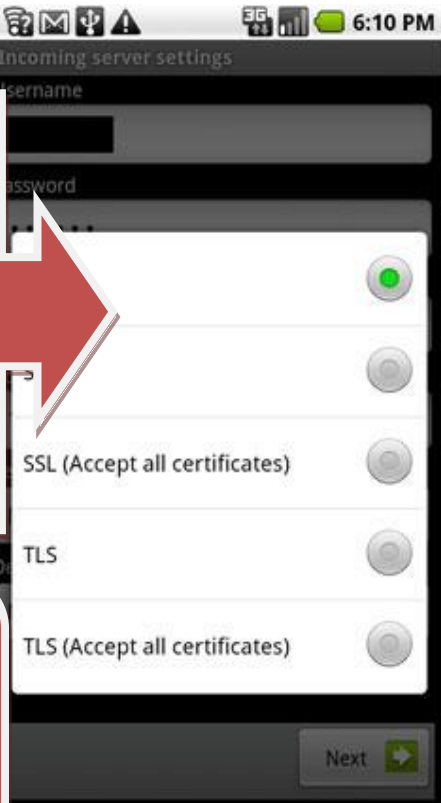


Step 3:

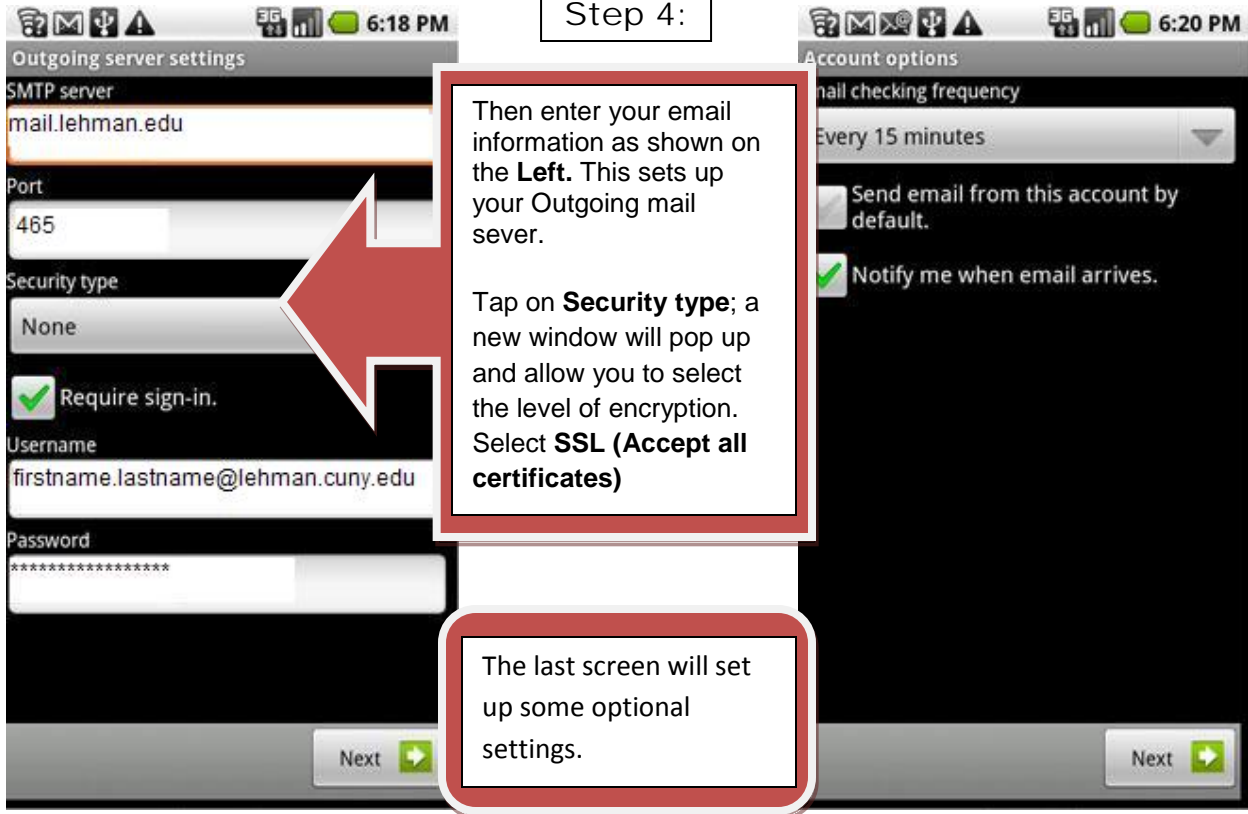
Then enter your email information as shown on the **Left**. This sets up you incoming mail sever.

Tap on **Security type**; a new window will pop up and allow you to select the level of encryption. Select **SSL (Accept all certificates)**

Once the Security type has been selected the pop up window will close and you can continue to the next step.



Step 4:



NOTE: Enable SSL when asked. Your emails should start flowing into your mail app once you have completed these steps. Please contact the IT Center Help Desk (Carman Hall 108 or (718) 960-111 or help.desk@Lehman.cuny.edu if further assistance is needed.