



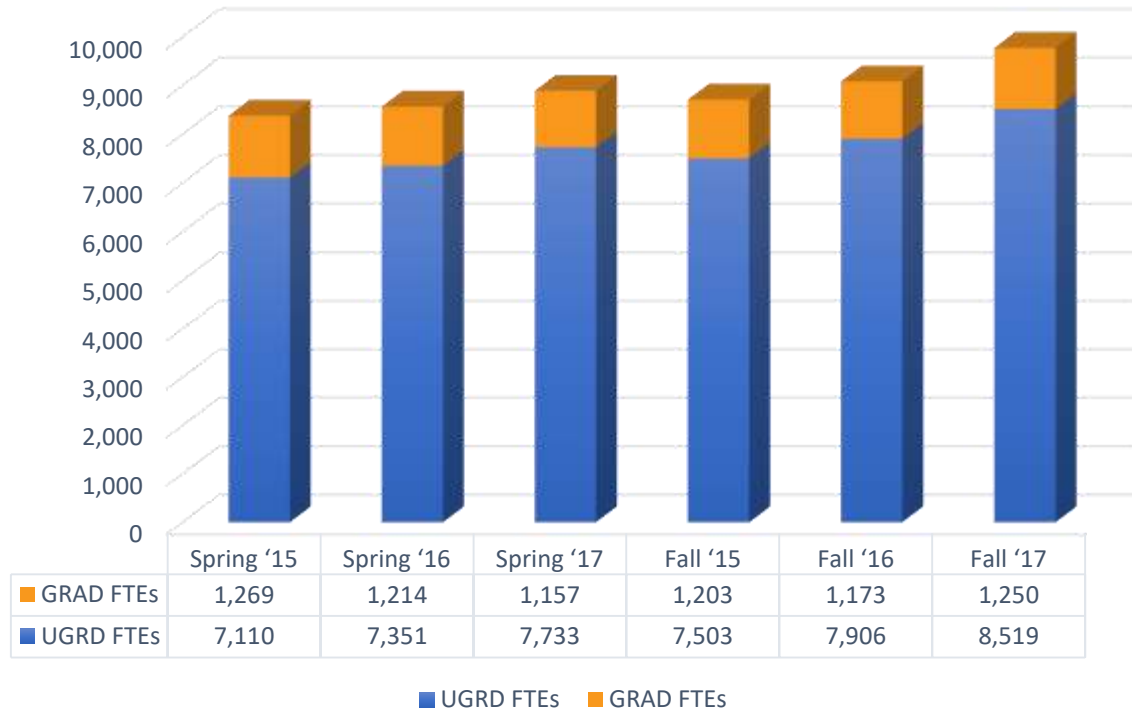
**LEHMAN**  
COLLEGE



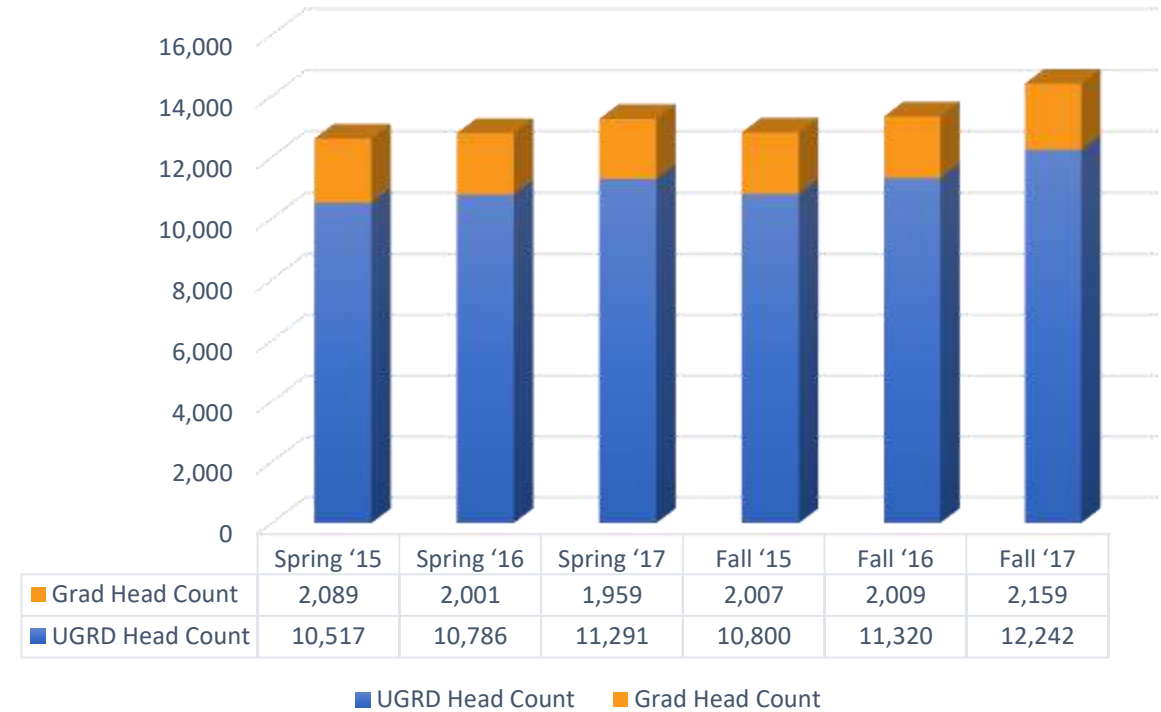
# **Enrollment and Financial Aid Units**

# Enrollment Growth

## FTEs



## Head Count

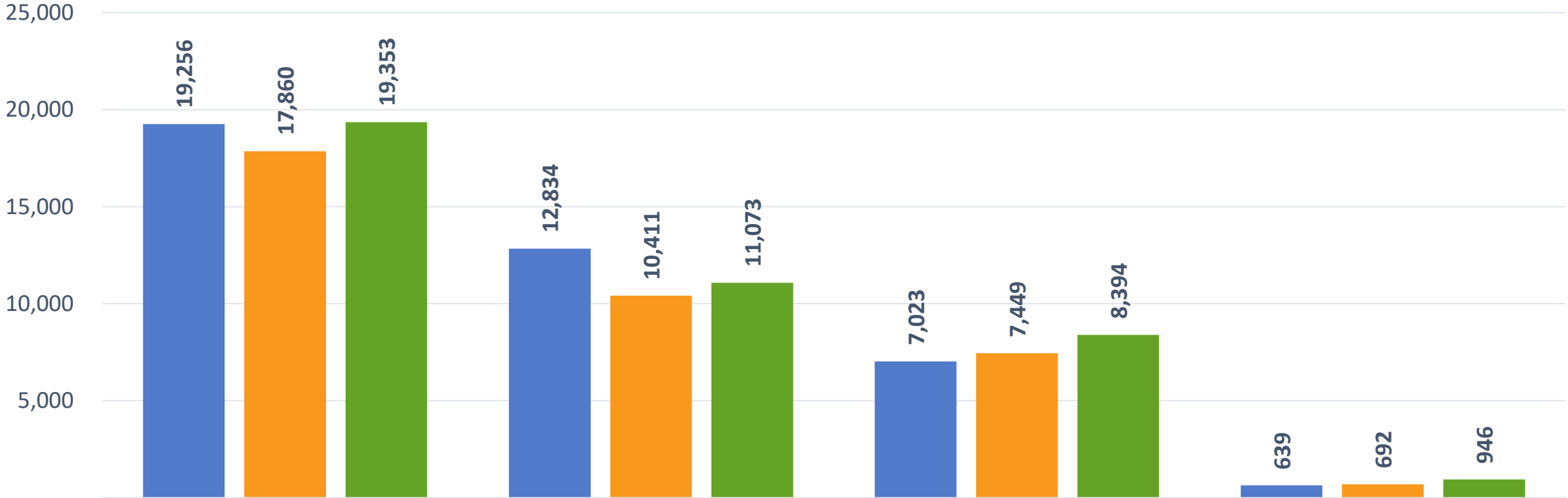




# Admissions and Recruitment

---

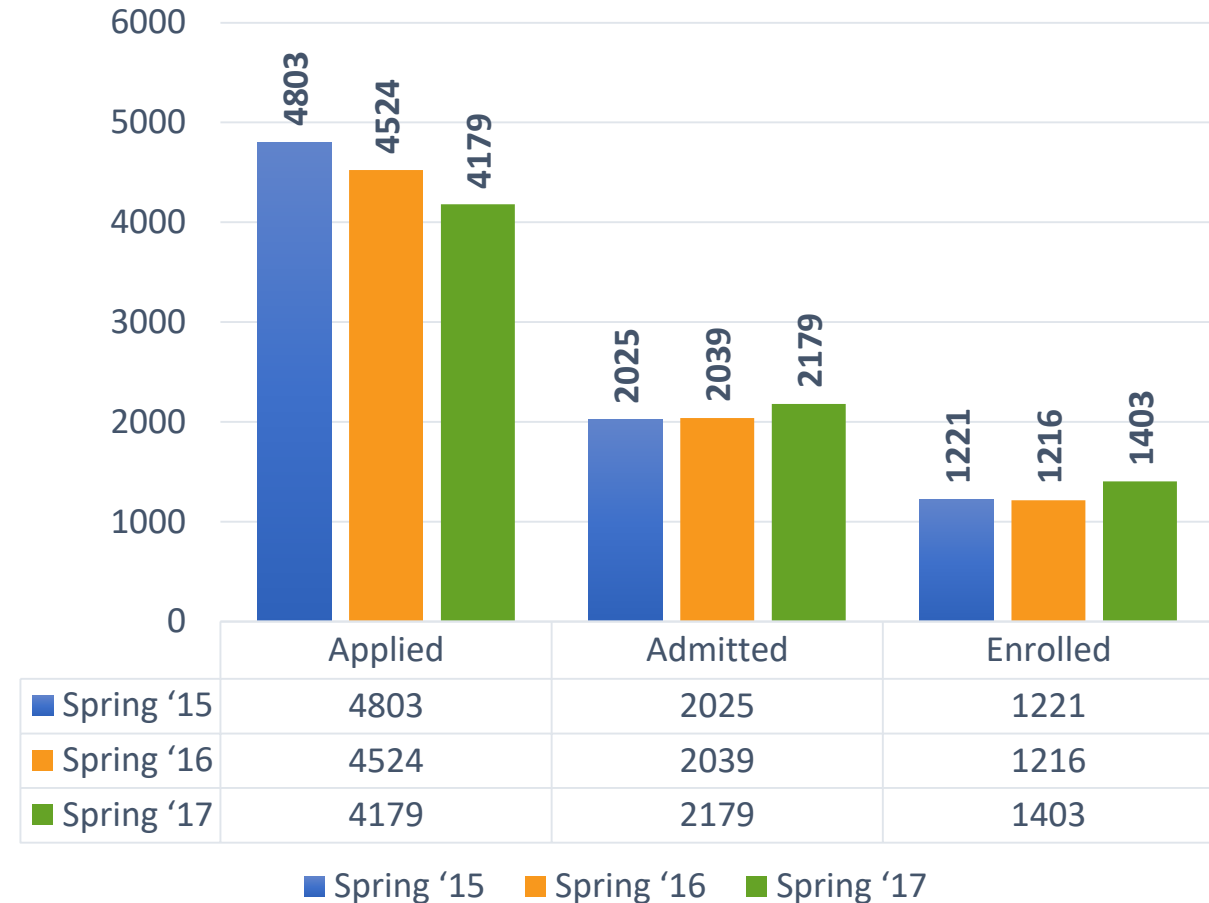
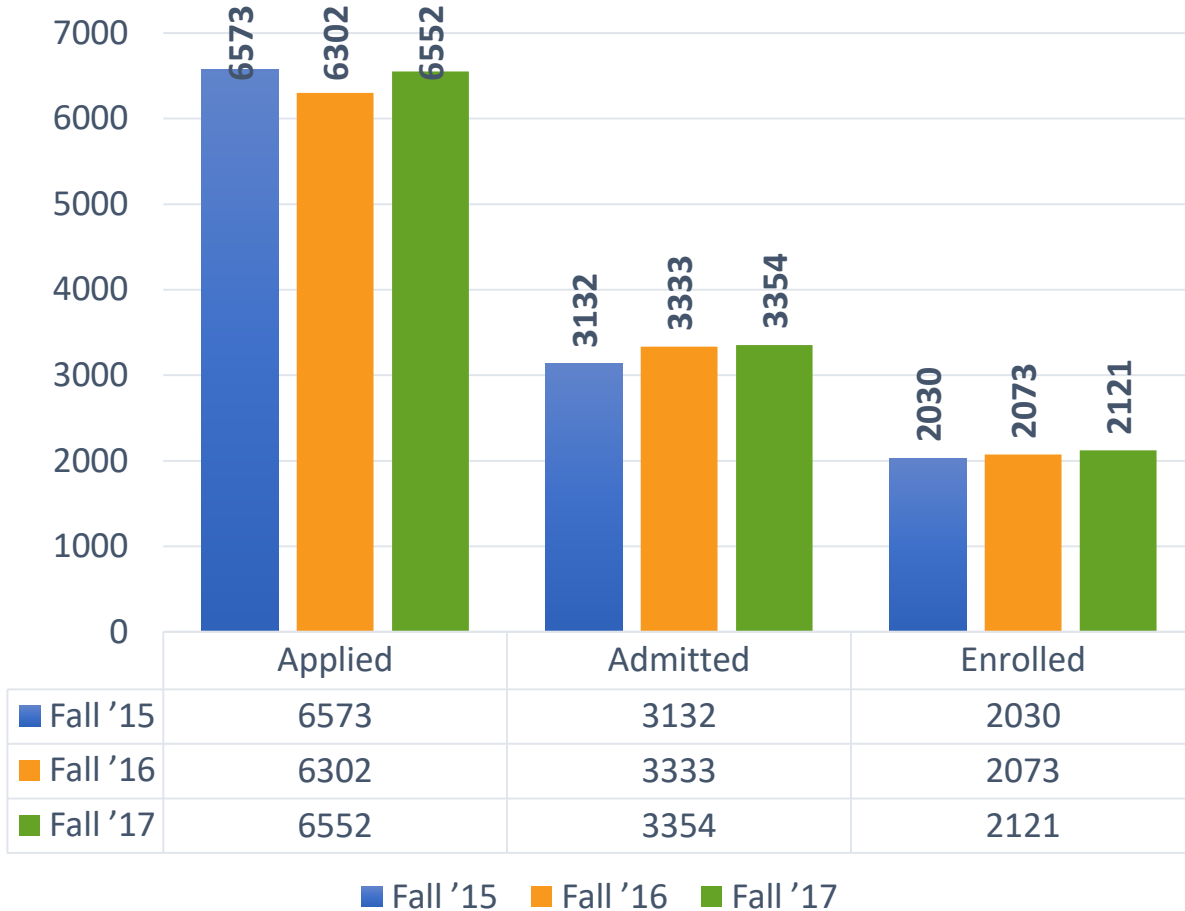
# Freshman Funnel



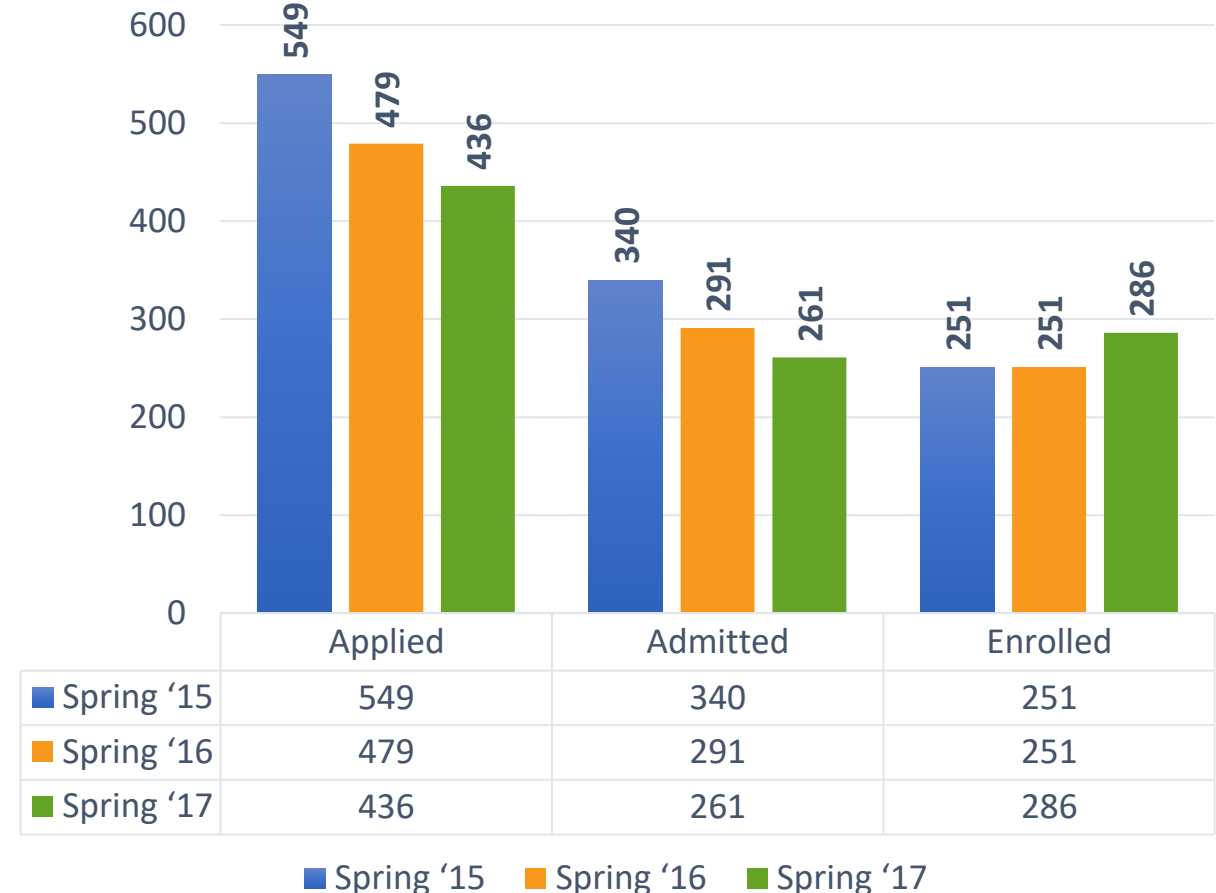
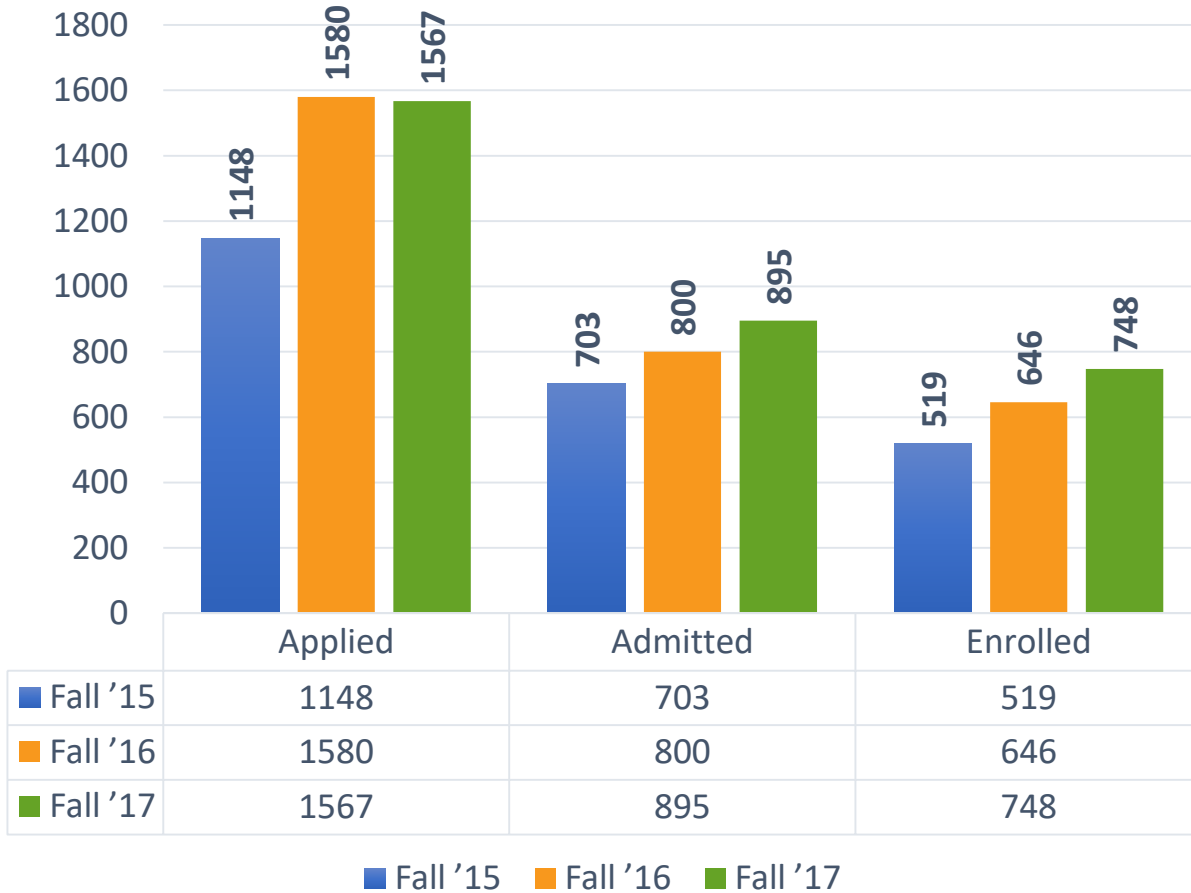
	Applied	Rejected	Admitted	Enrolled
■ Fall '15	19,256	12,834	7,023	639
■ Fall '16	17,860	10,411	7,449	692
■ Fall '17	19,353	11,073	8,394	946

■ Fall '15   ■ Fall '16   ■ Fall '17

# Transfer Funnel

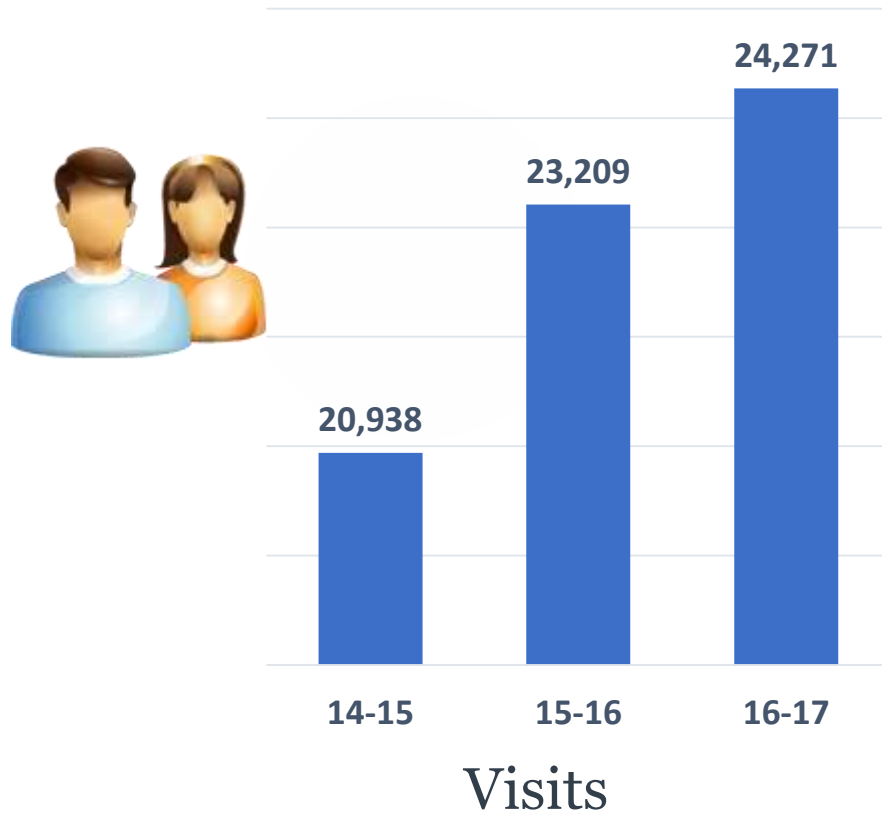


# Graduate Funnel

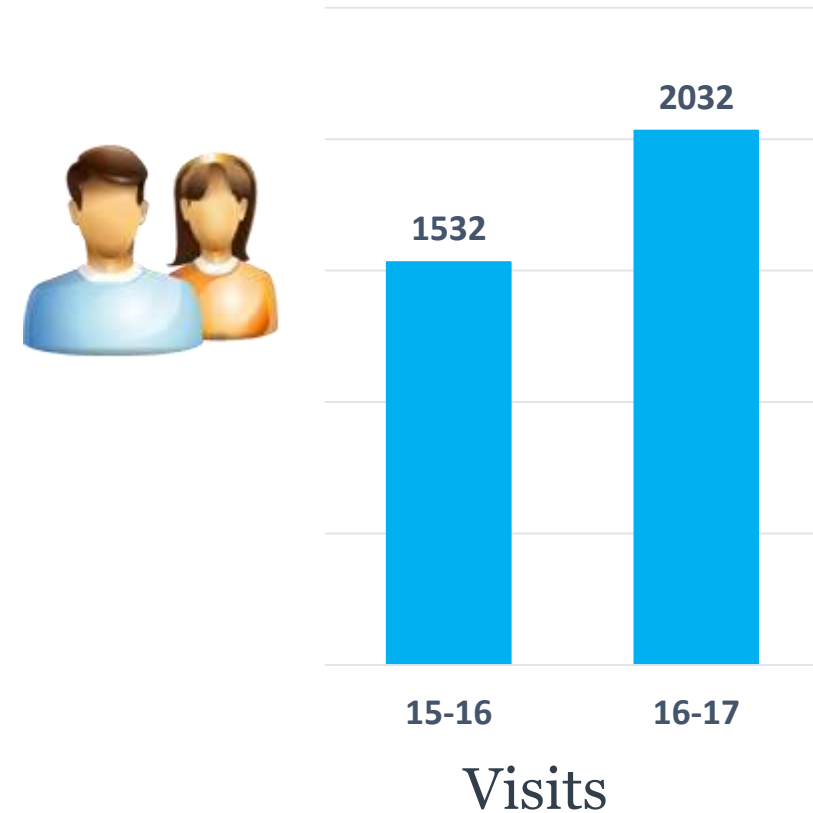


# Admissions Activities: Student Office Visits

## Undergraduate

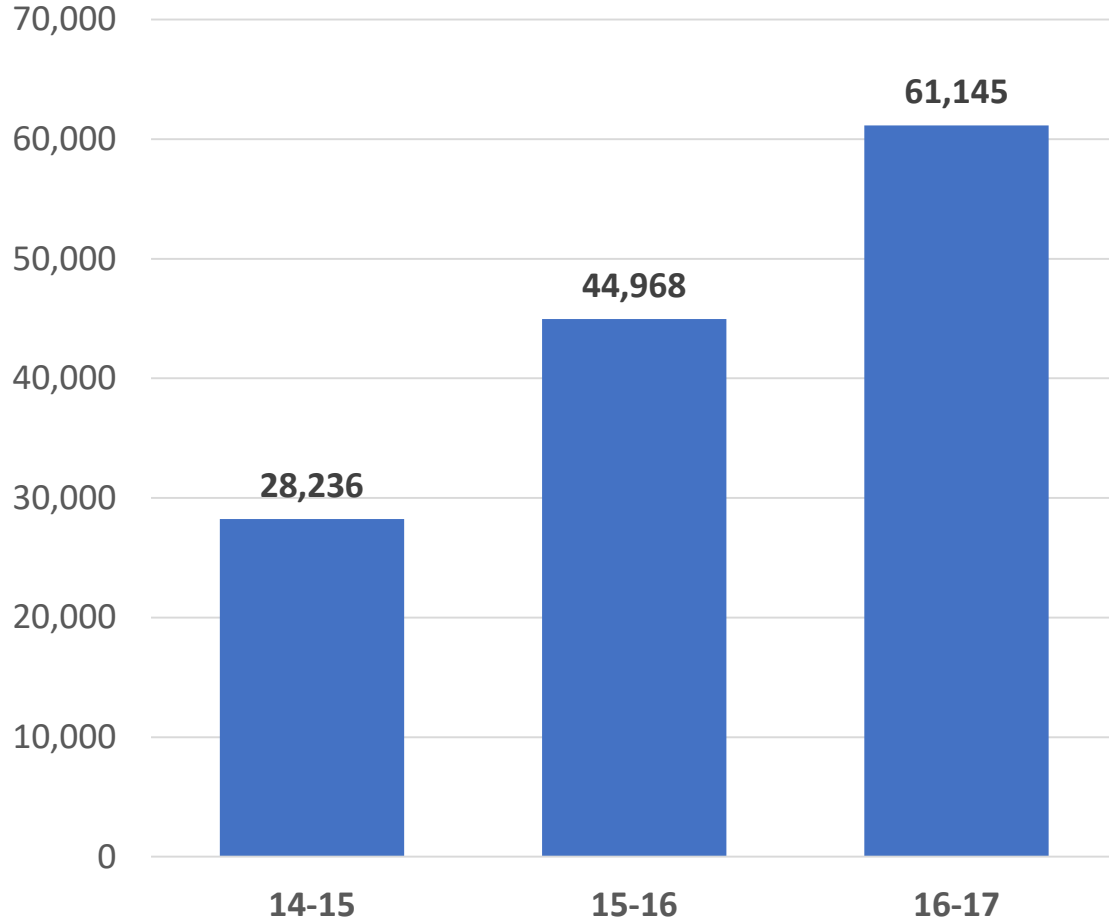


## Graduate

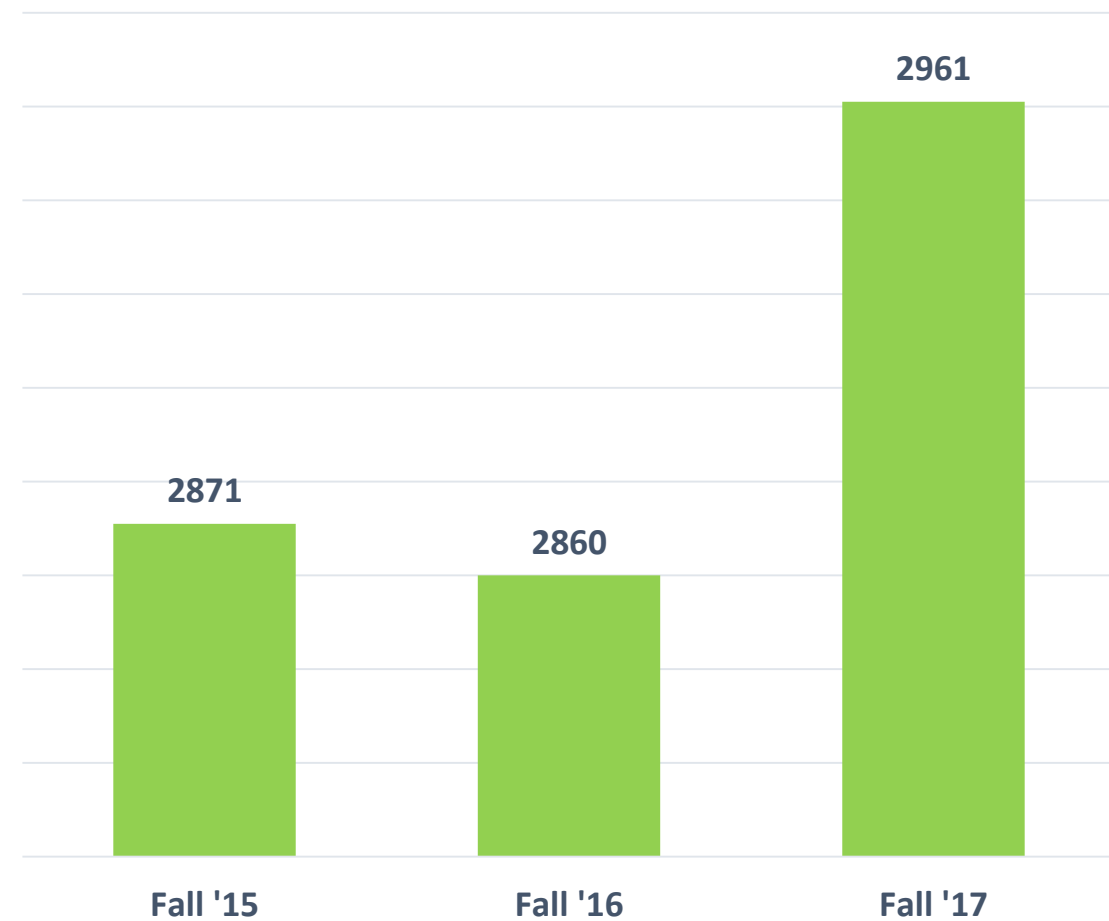


# Admissions: Undergraduate Activities

## TCE Rules Written



## TCE's Completed





# Financial Aid

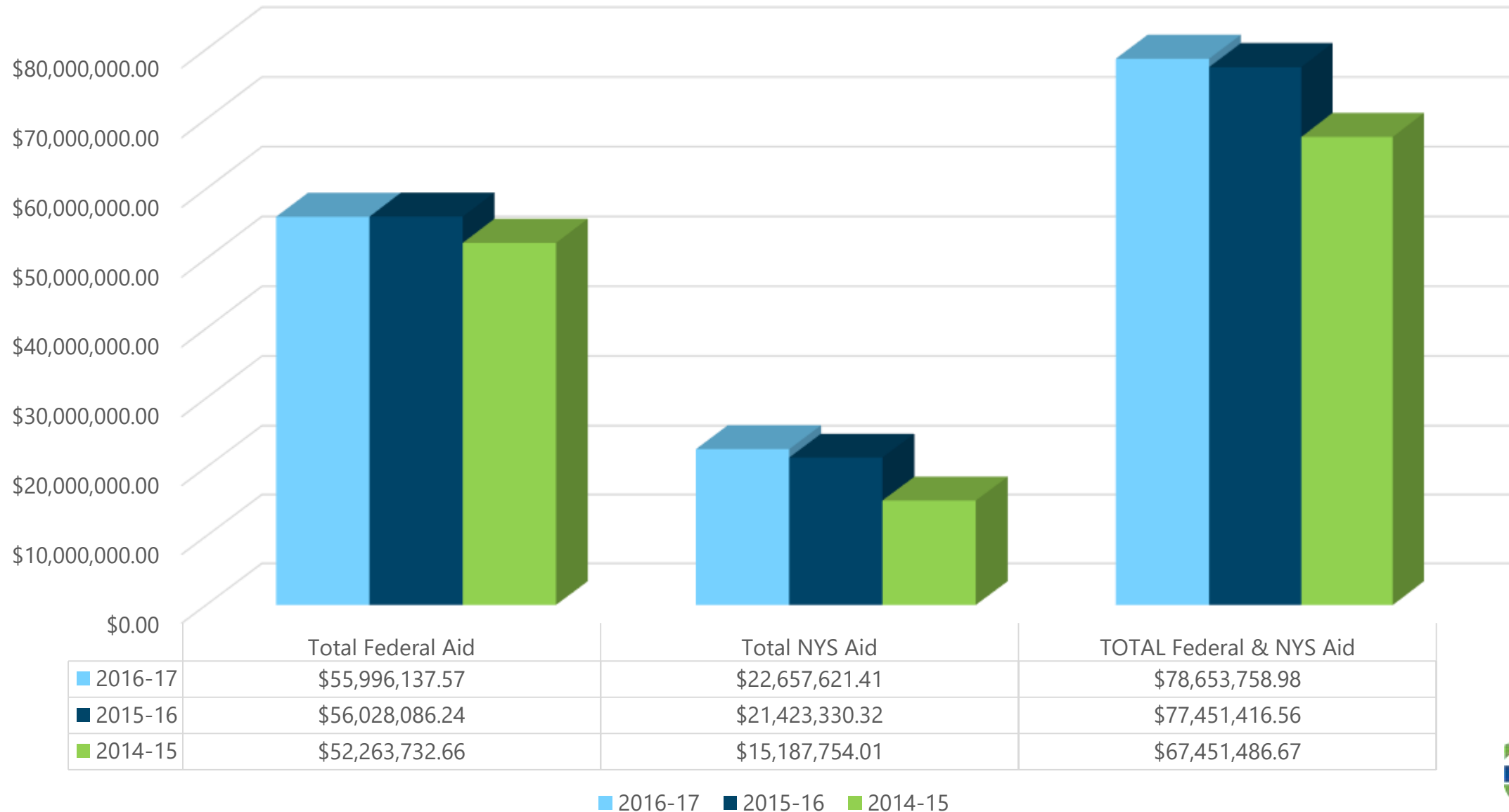
---

# Financial Aid Office Overview

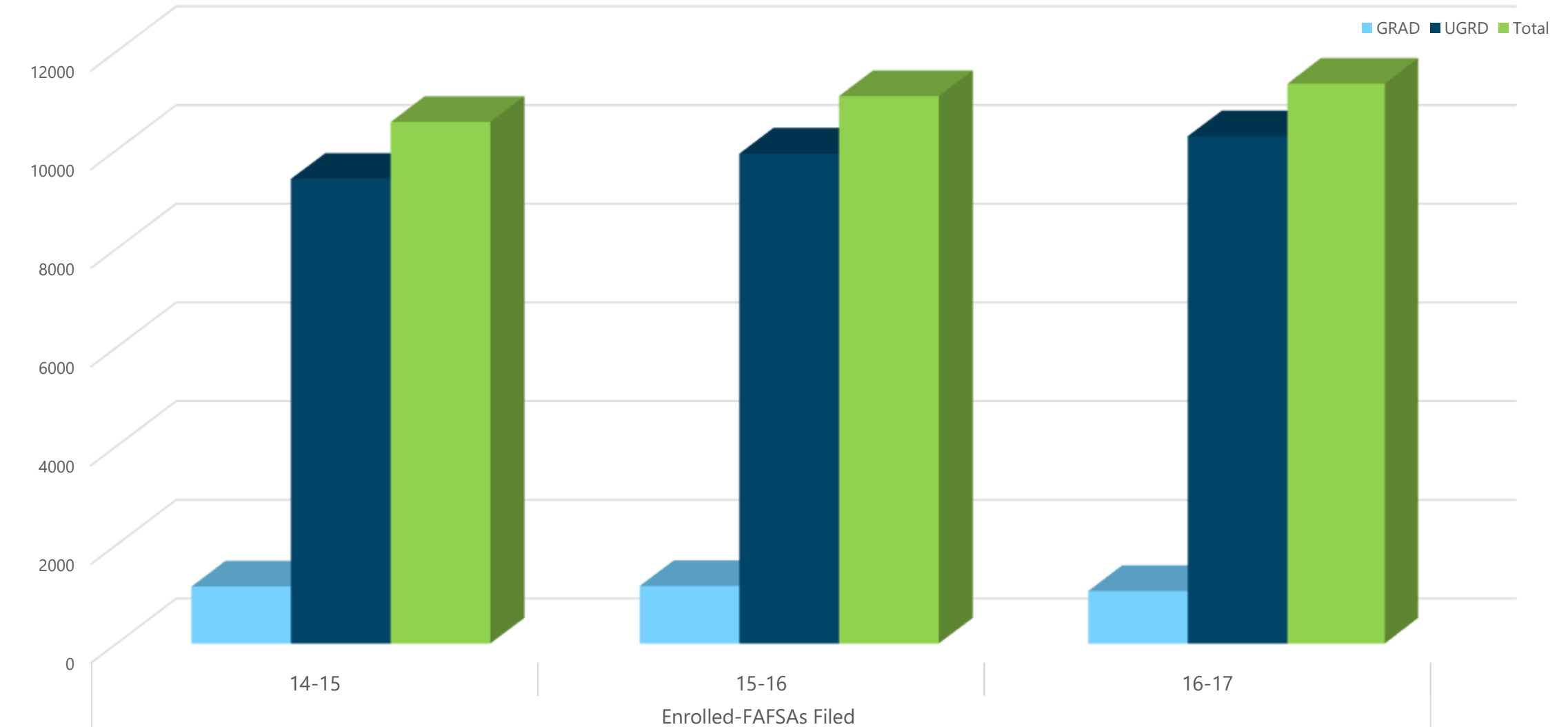
---

- ❑ Responsible for administering all areas of the Title IV Federal Financial Aid programs
- ❑ Responsible for administering the application and disbursement portion of all New York State Financial Aid programs
- ❑ Responsible for administering numerous additional financial aid programs.
- ❑ Responsible for all Federal and New York State compliance issues for the financial aid programs.
- ❑ Collaborative Efforts – Conduct numerous financial aid presentations for prospective, new and continuing students along with representing the aid office at all orientations and Lehman College functions.

# Federal and N.Y. State Aid Disbursed



# FAFSAs Filed



GRAD	1153	1165	1063
UGRD	9415	9928	10280
Total	10568	11093	11343

# Academic Advisement

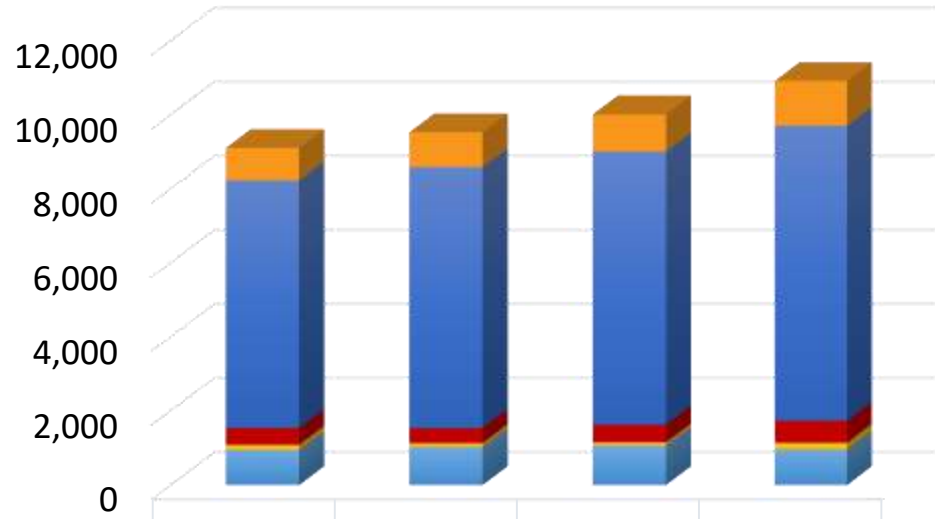
---

# OAA Points of Pride



# Advising a Campus

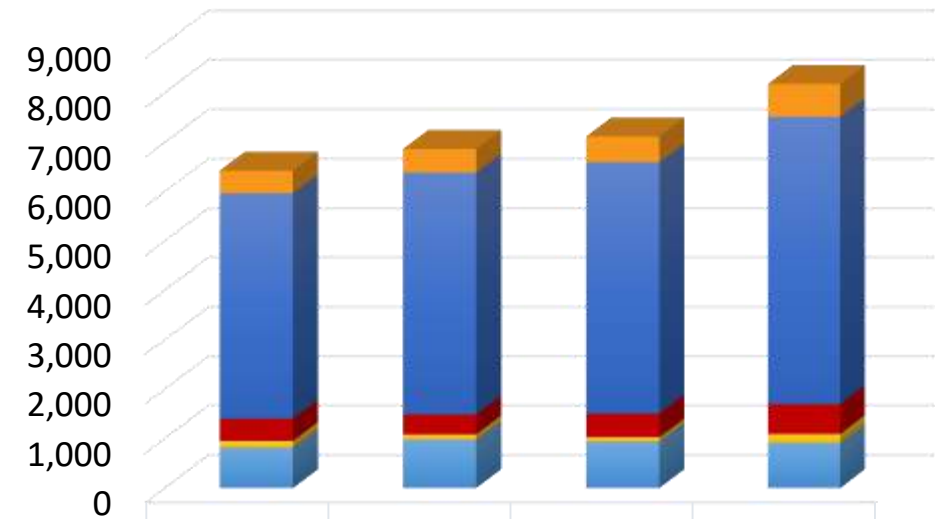
## Head Count



	Fall '14	Fall '15	Fall '16	Fall '17
ADP	876	938	1,000	1,207
Academic Advisement	6,686	7,048	7,378	7,965
FYI	454	407	478	599
LSP/MHC	139	104	88	175
SEEK	942	1,023	1,060	959

SEEK LSP/MHC FYI Academic Advisement ADP

## FTEs

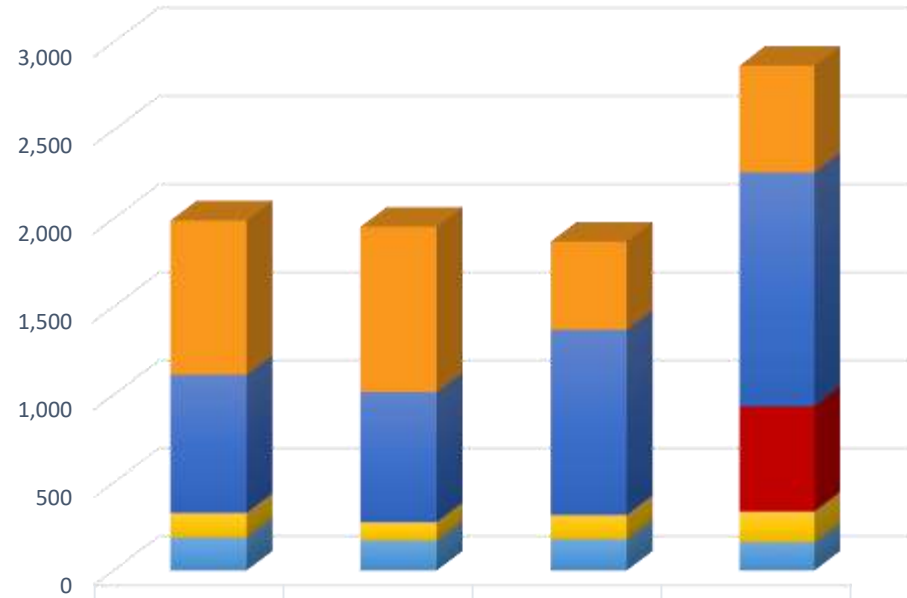


	Fall '14	Fall '15	Fall '16	Fall '17
ADP	455	477	521	664
Academic Advisement	4,565	4,900	5,093	5,824
FYI	454	407	478	604
LSP/MHC	128	101	85	176
SEEK	823	981	942	916

SEEK LSP/MHC FYI Academic Advisement ADP

# Advising Caseloads by Program

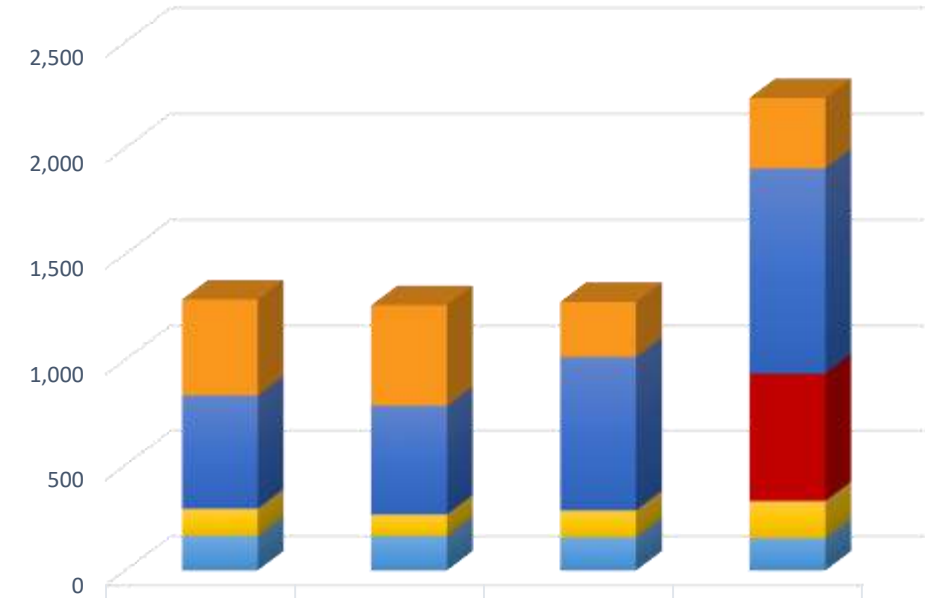
## Head Count



	Fall '14	Fall '15	Fall '16	Fall '17
ADP	876	938	500	604
Academic Advisement	787	741	1,054	1,328
FYI				599
LSP/MHC	139	104	139	175
SEEK	188	171	177	160

SEEK LSP/MHC FYI Academic Advisement ADP

## FTEs



	Fall '14	Fall '15	Fall '16	Fall '17
ADP	455	477	261	332
Academic Advisement	537	516	728	971
FYI				604
LSP/MHC	128	101	128	176
SEEK	165	164	157	153

SEEK LSP/MHC FYI Academic Advisement ADP



# Academic Standards and Evaluation

---

# AS&E Overview



## Consultation

- Resource to faculty, professional staff, and students with regard to academic standards, academic policies, and procedures
- Coordination of the onboarding of new academic advising staff



## Collaborative Efforts

- Development of the workflows for eRMR in collaboration with IT and the Registrar
- Establishment of partnerships with Academic Departments to effect transparent changes and updates in the Majors via Curriculum Committee and Senate in retention and graduation efforts



## Approvals

- eGrades
- ePermits and Manual Permits
- A-1 Recommendation Forms (eRMR)



## Appeals

- Hearing and adjudication of all types of appeals

# AS&E Data Points

- 1 eGrade Approvals**  
January 2017 – June 2017  
Total = 789
- 2 A-1 Approvals**  
January 2017 – August 2017  
Total = 650
- 3 ePermit Approvals**  
Summer: 275  
Fall: 427  
Total = 702
- 4 Office Visits**  
March 2017 – August 2017  
Total = 1202
- 5 Appeals Heard**  
January 2017 – August 2017  
Total = 1364
- 6 Appeals vis-à-vis Enrollment**  
Spring 2017 & Fall 2017  
Readmission & Dismissal  
Granted: 509  
SAP (Alone) Granted: 123  
Registered: 439

# AS&E Appeal Types

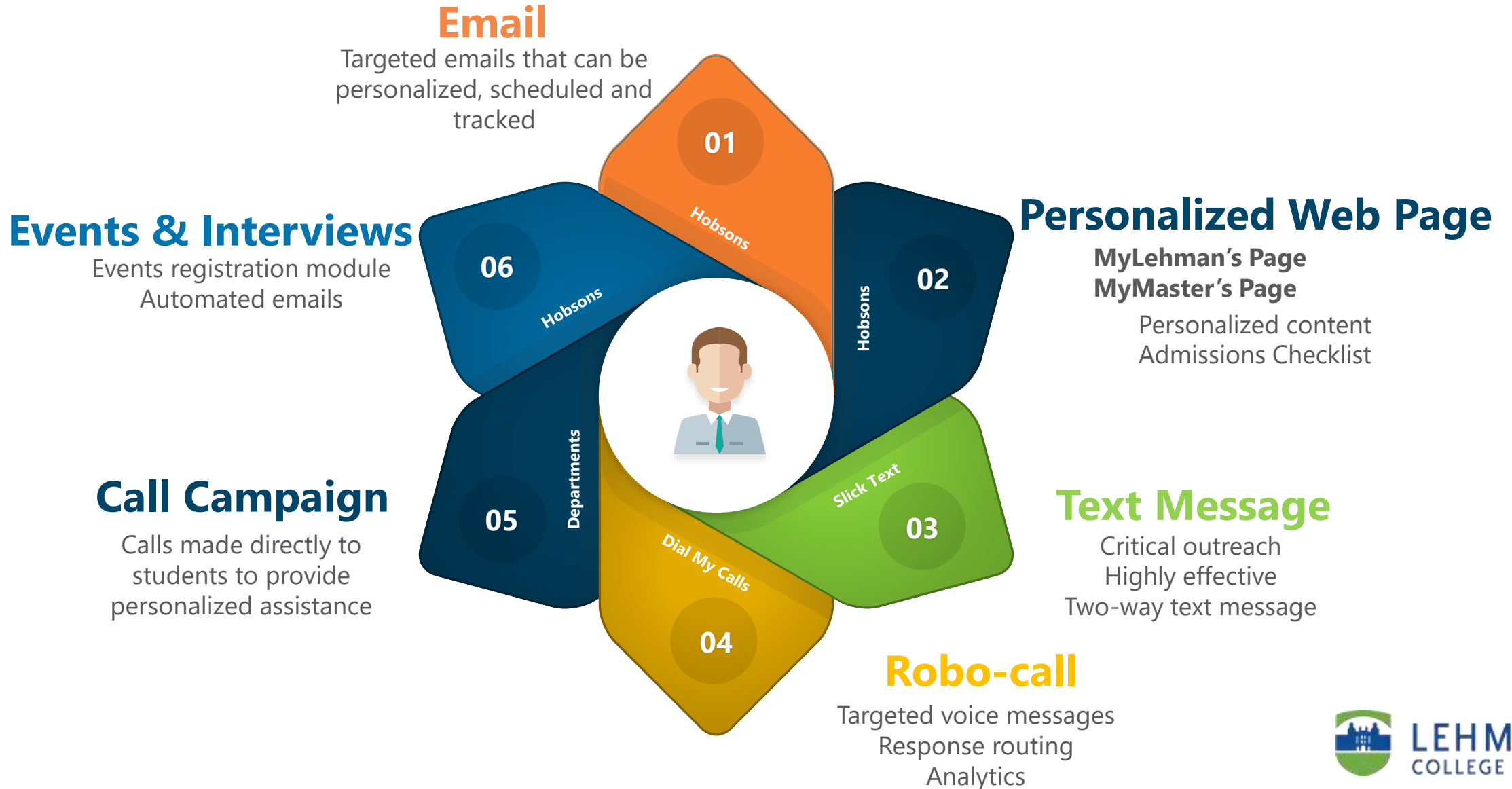
Readmission for students below 2.0	Dismissal	CUNY F Policy Variance
Deletion and Reversal of Tuition Liability	SAP	General Education Requirement Waiver
Retroactive Registration	One-time TAP Waiver	Approval of Course(s) to Fulfill General Education
Withdrawal after the Deadline	Total Medical Withdrawal	Transfer of Additional Credit(s) for Purposes of Graduation



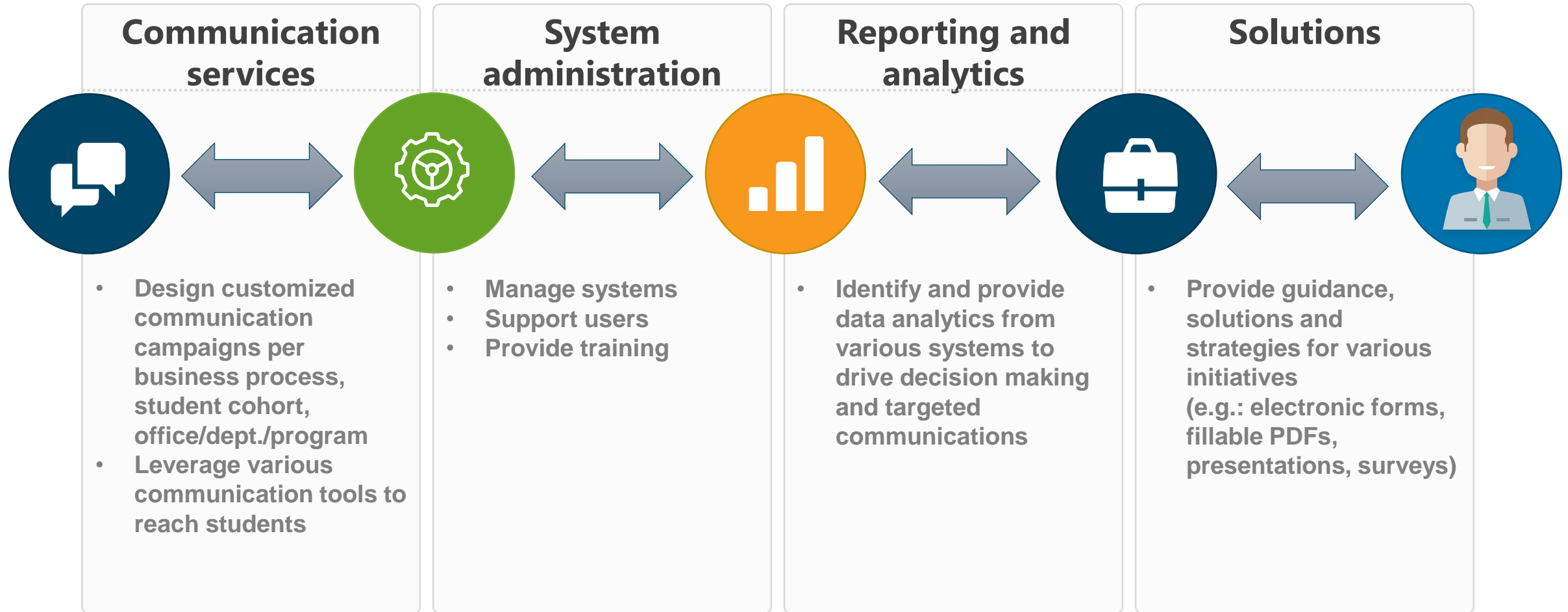
# Enrollment Services & Communications

---

# Creating a Culture of Communication



# Office of Enrollment Services & Communications



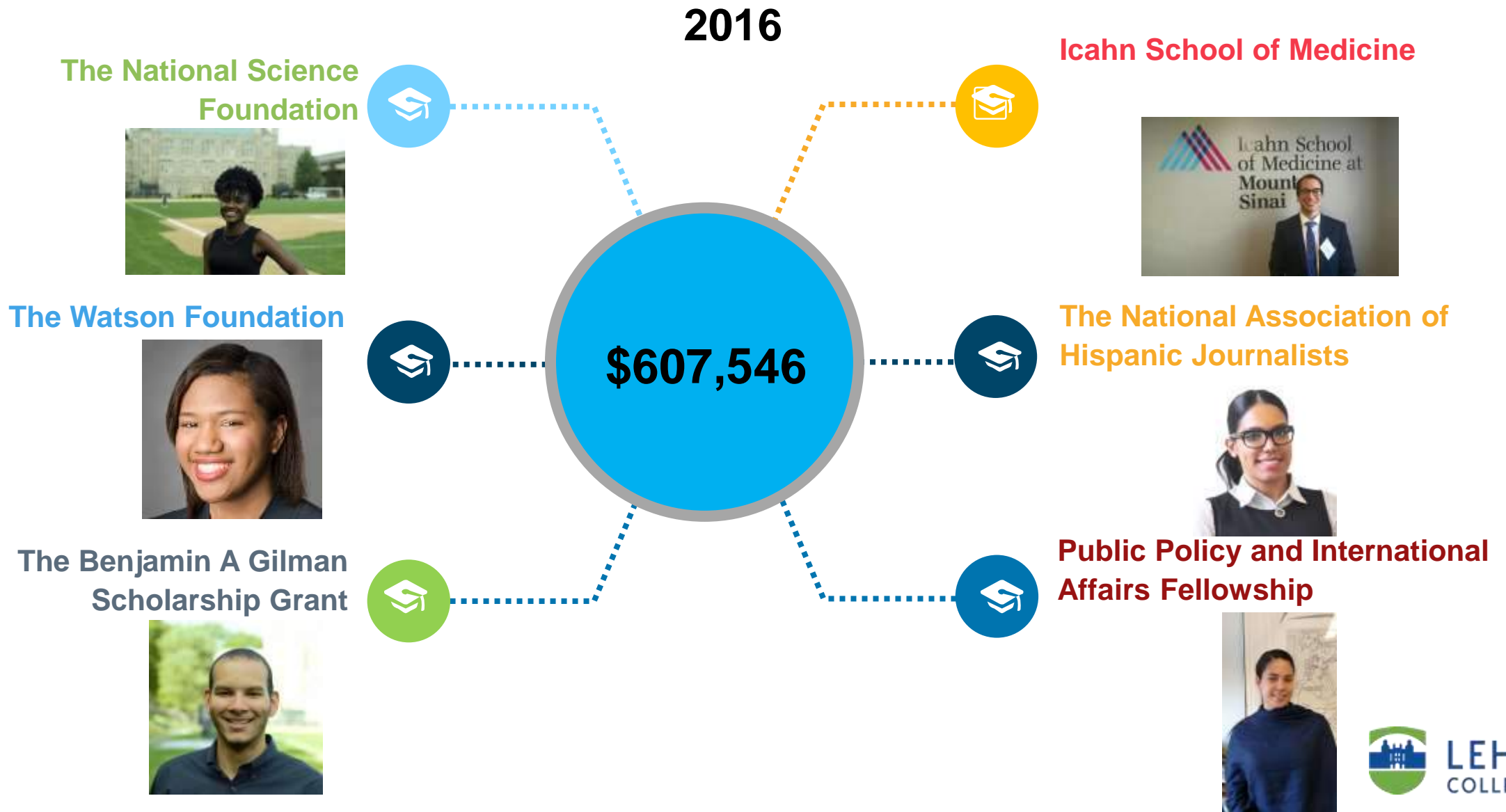


# Office of Prestigious Awards

---



# Prestigious Awards Points of Pride



# OPA Five Steps to Success

---



**Award Advising**



**Mentoring**



**Skill Building**



**Graduate School Preparation**



**Administration of Campus Selection Processes**

# Next...

---