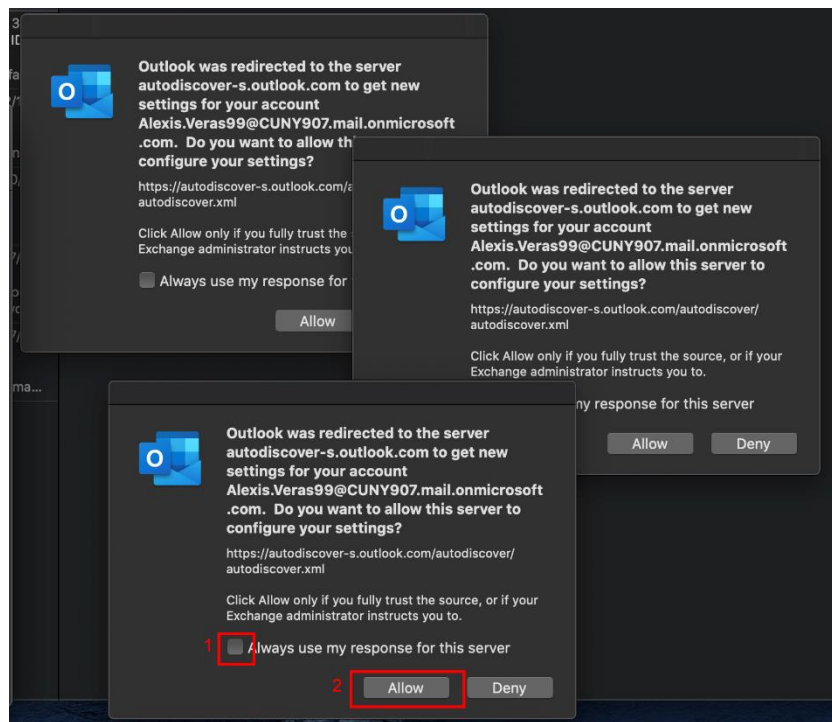
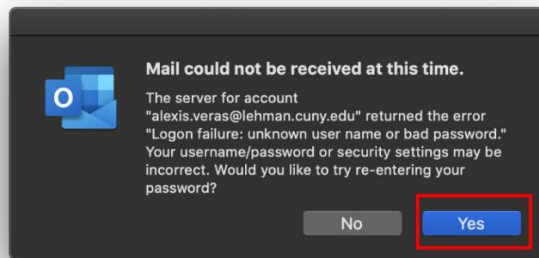


Mac OS Outlook 2019/Office 365 Configuration after Migration

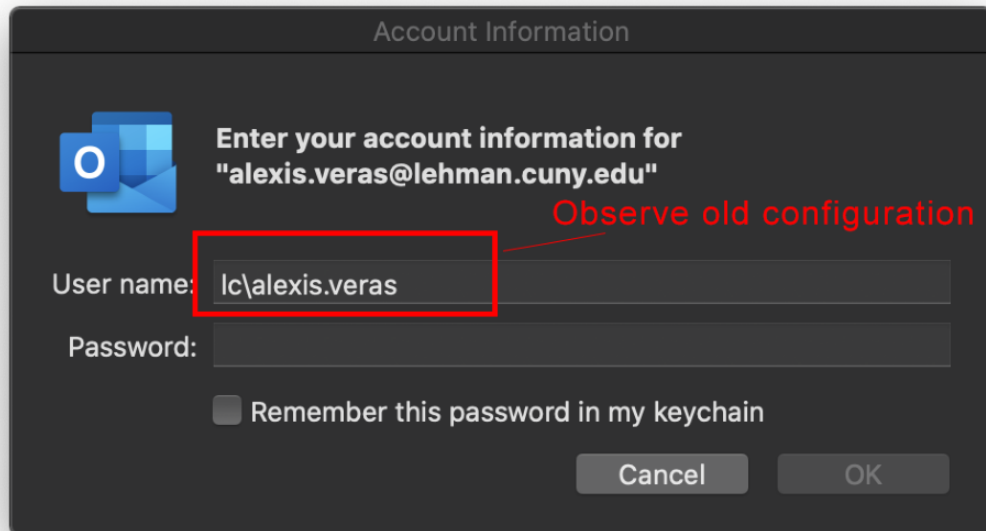
STEP 1: After your account has been migrated, you may see one or several Autodiscover prompts to get new server settings. Check the box **“Always use my response for this server”** and click on **“Allow”** as shown below:



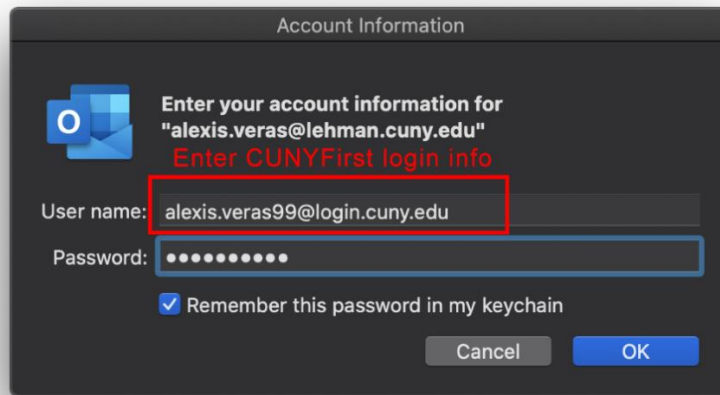
STEP 2: You will receive a prompt from the server to re-enter your password, click **“Yes”**:



STEP 3: The account information screen will pop up with your previous configuration:



STEP 4: Enter your CUNYFirst login information along with your CUNYFirst password and then click on **OK**.



NOTE: Your emails should start flowing into your mail app once you have completed these steps. Please contact the IT Center Help Desk (Carman Hall 108 or (718) 960-1111 or help.desk@Lehman.cuny.edu if further assistance is needed.