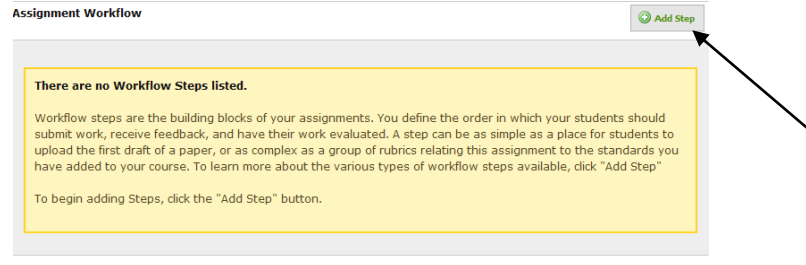
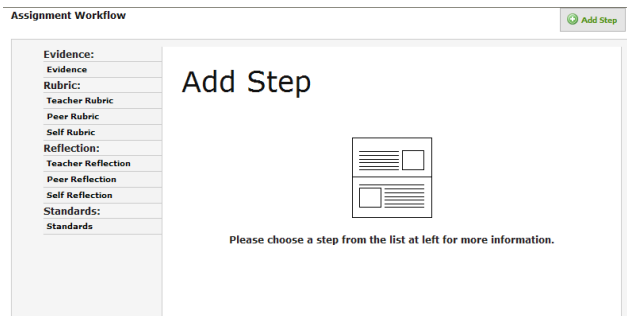


## Assignment Workflow

> Create Assignment (See: Adding Assignments) > Click Add Step



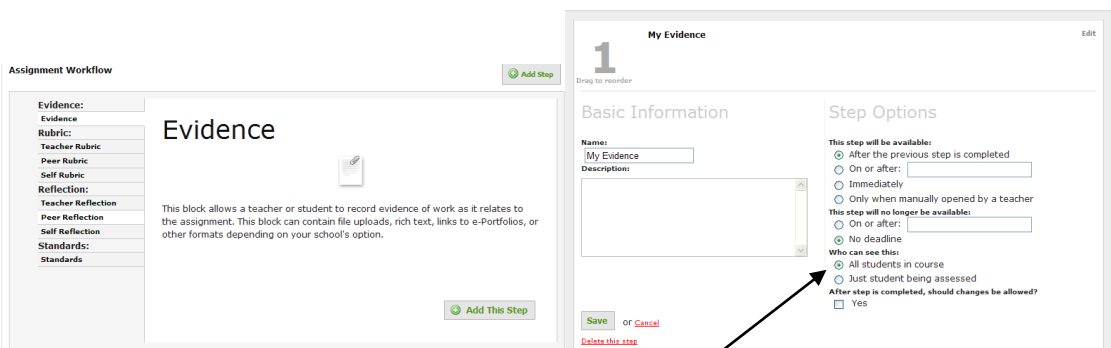
> Select the Step you wish to add (i.e. Evidence, Rubric, Reflection) > Click Add Step



> All options require basic information and selection of step options (i.e. when is step available, who can view the step, etc.)

### *Option 1 – Evidence*

> Select Evidence > Click Add Step



> Input the basic information and set up the step options criteria > Click Save

### Option 2 – Rubric

> Select the Rubric (Teacher, Peer, Self) > Click Add Step

> Input the basic information

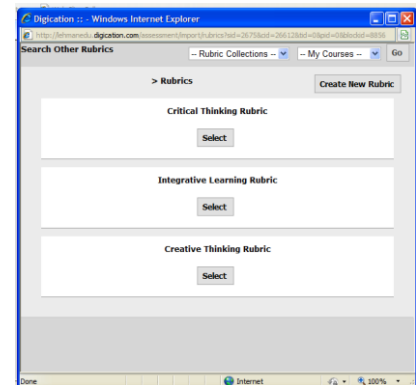
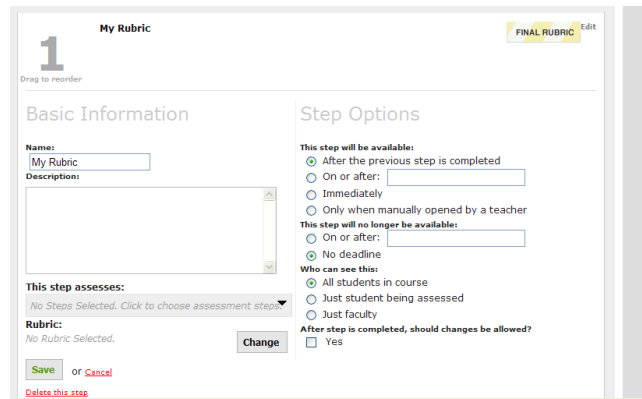
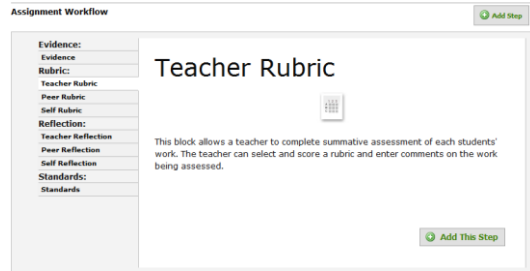
> Select a Rubric

> Click Change (Digication gives three default/basic rubrics, however you can edit the Digication version or create a rubric from scratch)

> Select the Rubric of your choice or create new rubric\*\*

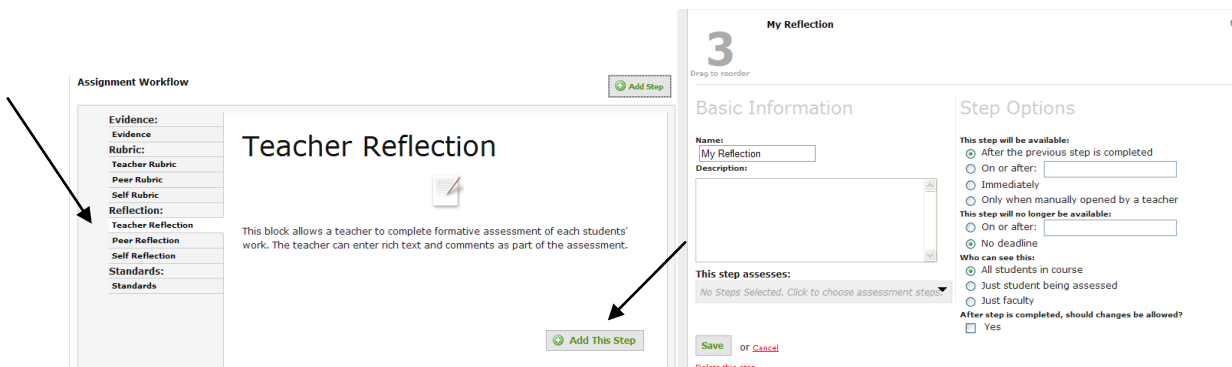
> Click Save

\*\*See Creating Rubric Guidelines



### Option 3 – Reflection

> Select the type of reflection > Click Add This Step > Input basic information > Click Save



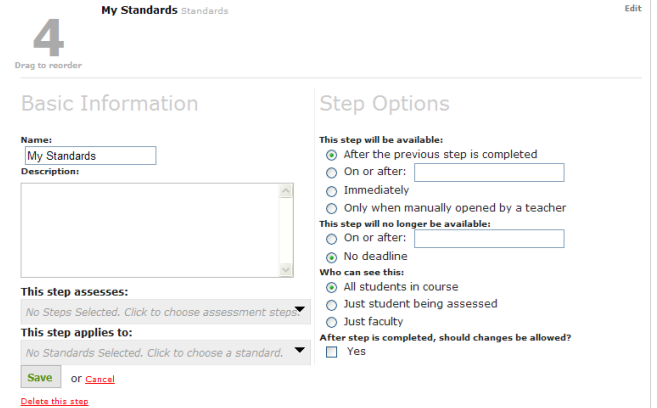
**Option 4 – Standards\*\***

> Select Standards > Click Add This Step

> Input Basic Information and Step Options > Select a standard\*\* by the clicking on the drop down arrow, This step applies to:

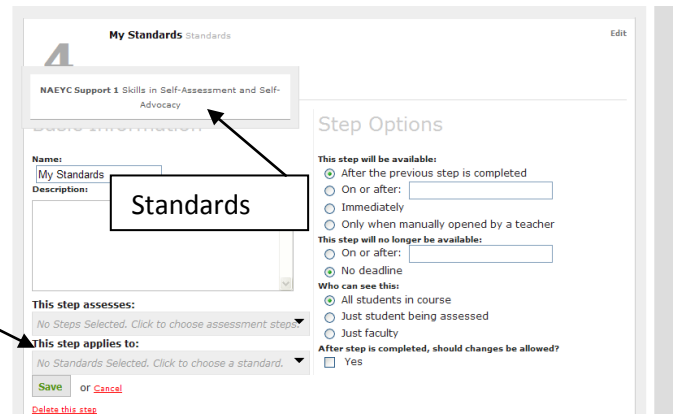
[The Standards available in your workflow are the Standards you selected when setting up your course.]

**\*\*Note: Standards must be added via your Digication Administrator long in advance of building this step. Refer to the Guidelines for Adding Standards.**

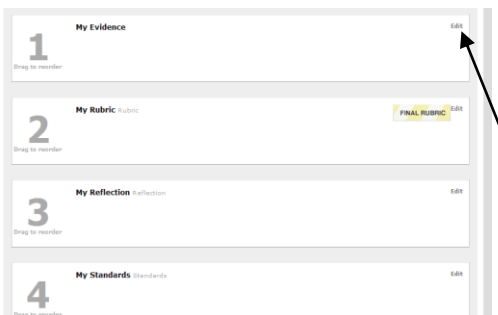


> All course Standards\*\* will appear at the top of the page.

> Click on the Standard you want aligned with this assignment > Standard will appear under This step applies to: > Click Save



> To add multiple steps to one assignment:  
Reorder the steps by dragging them with your cursor  
> **Edit steps:** Click Edit located in the upper right hand corner of each step



> Delete a step: Click Edit > Click Delete this step at bottom of the page

