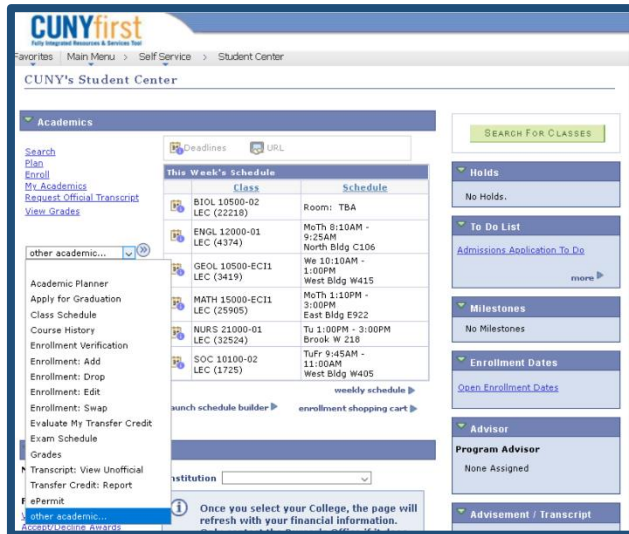


All student should review [FAQ](#) and consult with their [advisor](#) prior to selecting this option  
 Students will be able to elect this option starting **May 11, 2020**.

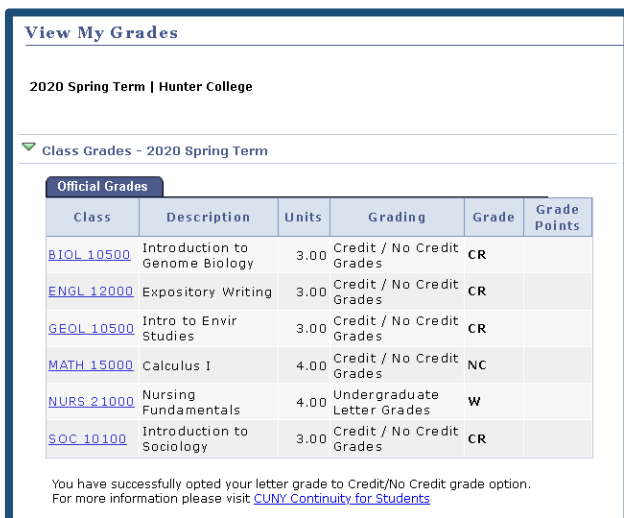
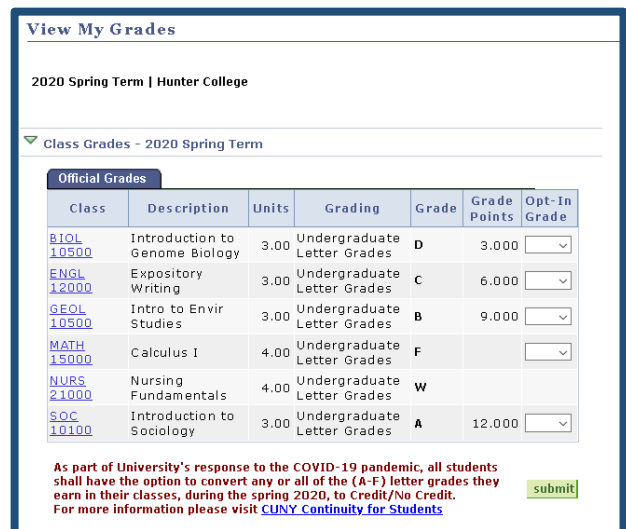


## 1. Log-in

- Go to [home.cunyfirst.cuny.edu](http://home.cunyfirst.cuny.edu).
- Go to "Student Center".
- Click "View Grades".

## 2. Select CR/NC Option

- Select Opt-in Grade CR/NC.
- Confirm that you want to Opt-in.
- Click Submit.



## 3. Review Grades/GPA

- Contact your [Advisor](#) if any questions.
- Contact your [Registrar Office](#) if any errors encountered.
- Contact your [Campus Helpdesk](#) if any technical questions.

Once a student chooses to convert course grades to the CR/NC, the decision is final.